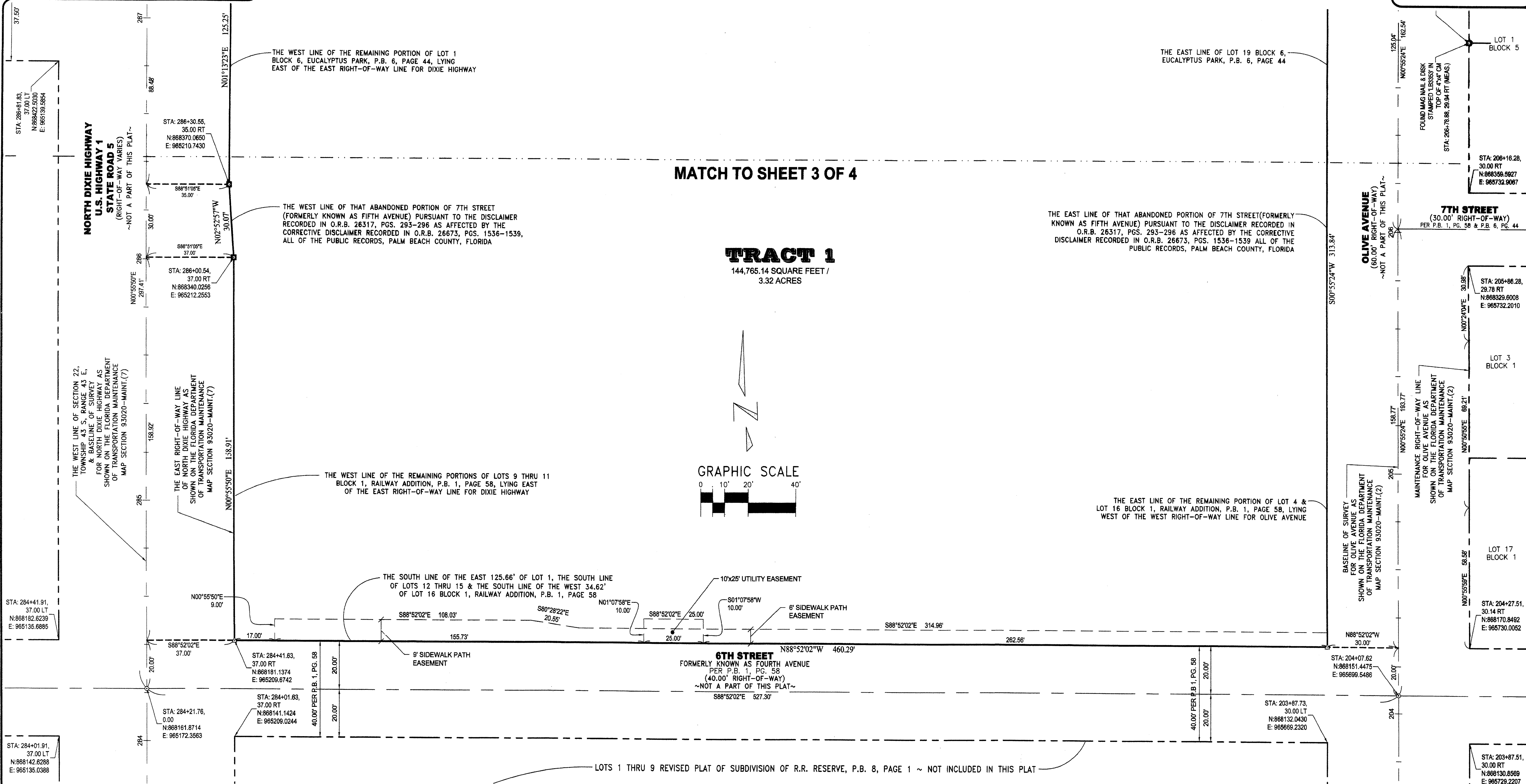
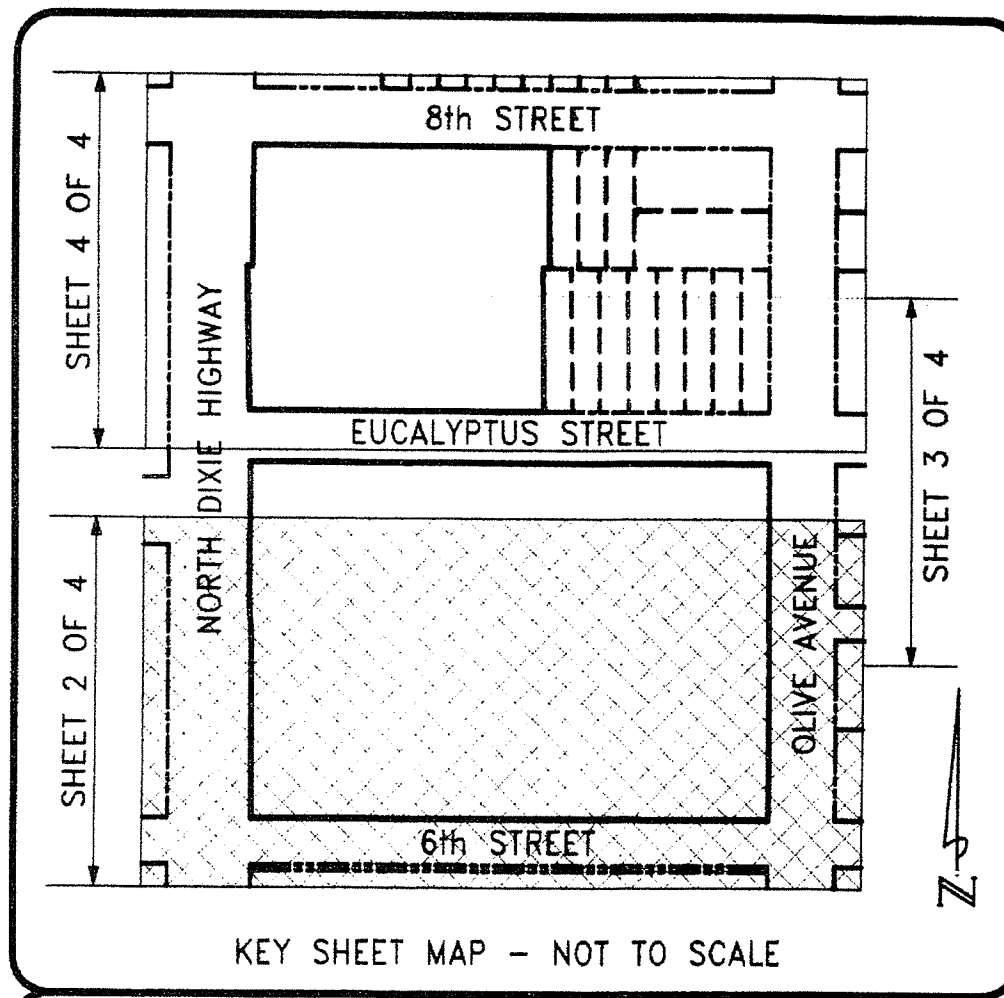


LOFTIN PLACE

BEING A REPLAT OF A PORTION OF BLOCK 1, RAILWAY ADDITION, PLAT BOOK 1, PAGE 58, LYING WEST OF OLIVE AVENUE AND LESS THE RIGHT-OF-WAY FOR DIXIE HIGHWAY, A REPLAT OF LOT 1, LESS THE WEST 12.00 FEET THEREOF, AND ALL OF LOTS 2,3,4,5,6,7,8,9,10 AND 11, BLOCK 1, TOGETHER WITH ALL OF BLOCK 6, LYING WEST OF OLIVE AVENUE AND LESS THE RIGHT-OF-WAY FOR DIXIE HIGHWAY AMENDED PLAT OF EUCALYPTUS PARK, PLAT BOOK 6, PAGE 44, AND A REPLAT OF LOTS 1 AND 2, LESS THE WEST 12.0 FEET THEREOF, AND ALL OF LOTS 3,4,5,6,7,8, BLOCK 7, BRELSFORD PARK ADDITION TO WEST PALM BEACH, PLAT BOOK 8, PAGE 21 TOGETHER WITH THAT ABANDONED PORTION OF 7TH STREET (FORMERLY KNOWN AS FIFTH AVENUE), PURSUANT TO THE DISCLAIMER RECORDED IN O.R.B. 26317, PGS. 293-296 AS AFFECTED BY THE CORRECTIVE DISCLAIMER RECORDED IN O.R.B. 26673, PGS. 1536-1539, ALL OF THE PUBLIC RECORDS, PALM BEACH COUNTY, FLORIDA WITH ALL OF THE ABOVE DESCRIBED LAND LYING AND BEING IN A PORTION OF SECTIONS 15 & 22, TOWNSHIP 43 SOUTH, RANGE 43 EAST, PALM BEACH COUNTY, FLORIDA

SHEET 2 OF 4

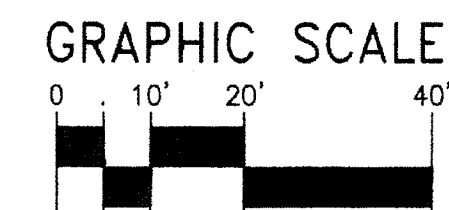
JULY 2014



114
STATE OF FLORIDA
COUNTY OF PALM BEACH
THIS PLAT WAS FILED
FOR RECORD AT _____ M.
THIS DAY OF _____, 2014
AND DULY RECORDED IN PLAT
NO. _____ ON PAGES _____
THRU _____
SHARON R. BOCK
CLERK AND COMPTROLLER
BY _____ D.C.

MATCH TO SHEET 3 OF 4

TRACT 1
144,765.14 SQUARE FEET /
3.32 ACRES



P:\112861\112861.dwg, 11/20/14 11:02:27 AM

LEGEND OF SYMBOLS: □ = 4"x4" CONCRETE MONUMENT STAMPED P.R.M. LB4897 OR AS NOTED. Δ = MAG NAIL & DISK STAMPED "P.R.M. LB 4897" OR AS NOTED. ○ = MAG NAIL & DISK STAMPED "LB 4897" OR AS NOTED.		LEGEND OF ABBREVIATIONS: ARITHMETIC / ANNOTATION ABBREVIATIONS ° = DEGREES CB = CHORD BEARING ' = MINUTES P.C. = POINT OF CURVATURE " = SECONDS P.T. = POINT OF TANGENCY R = RADIUS P.I. = POINT OF INTERSECTION Δ = DELTA RAD. = RADIAL L = ARC LENGTH N.R. = NON-RADIAL		EASEMENT / MISCELLANEOUS ABBREVIATIONS L.A.E. = LIMITED ACCESS EASEMENT D.E. = DRAINAGE EASEMENT L.B.E. = LANDSCAPE BUFFER EASEMENT U.E. = UTILITY EASEMENT L.M.E. = LAKE MAINTENANCE EASEMENT L.W.D. = LAKE WORTH DRAINAGE DISTRICT S.L.E. = SANITARY SEWER LINE EASEMENT W.L.E. = WATER LINE EASEMENT P.B.C.U.E. = PALM BEACH COUNTY UTILITY EASEMENT		THIS INSTRUMENT WAS PREPARED BY SCOTT F. BRYSON, IN AND FOR THE OFFICES OF KESHAVARZ & ASSOCIATES, INC. 711 NORTH DIXIE HIGHWAY, SUITE 201, WEST PALM BEACH, FLORIDA 33401 TELEPHONE (561) 689-8600. DATE: 12/11/13 CHECKED: SFB PROJECT No. SHEET No. SCALE: 1" = 20' APPROVED: SFB 12-996 2 of 4 DRAWN: SFB DWG No: D12-996P	
---	--	---	--	--	--	--	--

KESHAVARZ ASSOCIATES
Civil Engineers • Land Surveyors
711 North Dixie Highway, Suite 201
West Palm Beach, Florida 33401
Tel: (561) 689-8600 • Fax: (561) 689-5156